

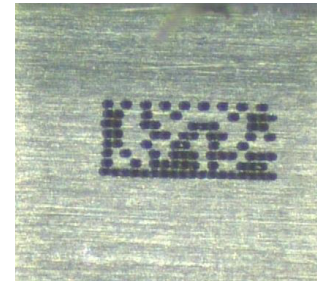
## Press Information

February 02, 2010

### PHILIPS LUMILEDS IMPLEMENTS FULL TRACEABILITY FOR POWER LEDs

**San Jose, California** – [Philips Lumileds](#) announced today that it has implemented complete forward and backward traceability for LUXEON power LED products. It is now possible to identify to the wafer level exactly when, where, and how each of the hundreds of millions of [LUXEON LEDs](#) was manufactured. Philips Lumileds uses 2D barcode technology to uniquely identify and track through the manufacturing process. Philips Lumileds is the first power LED manufacturer to adopt and implement this precision manufacturing control system.

For customers in the automotive and consumer electronics industry, this level of traceability is highly desired and often required of suppliers. Philips Lumileds expects that as the LED-based lighting solution market grows, the lighting industry will also look to LED manufacturers and other system component providers for this level of manufacturing control.



*Philips Lumileds LUXEON  
2D Barcode enables  
traceability*

For further information, please contact:

Steve Landau  
Philips Lumileds Lighting Company  
+1 408 964 2695  
[steve.landau@philips.com](mailto:steve.landau@philips.com)

#### **About Philips Lumileds**

Philips Lumileds is the world's leading provider of power LEDs for illumination solutions. The company's leading light output, efficacy and thermal management are direct results of the ongoing commitment to advancing solid-state lighting technology and enabling lighting solutions that are more environmentally friendly, help reduce CO<sub>2</sub> emissions and reduce the need for power plant expansion. Philips Lumileds' LUXEON LEDs are enabling new solutions for shop, outdoor, office, school, and home lighting applications. More information about the company's LUXEON LED products and solid-state lighting technologies can be found at [www.philipslumileds.com](http://www.philipslumileds.com).

#### **About Royal Philips Electronics**

Royal Philips Electronics of the Netherlands (NYSE: PHG, AEX: PHI) is a diversified Health and Well-being company, focused on improving people's lives through timely



innovations. As a world leader in healthcare, lifestyle and lighting, Philips integrates technologies and design into people-centric solutions, based on fundamental customer insights and the brand promise of “sense and simplicity”. Headquartered in the Netherlands, Philips employs approximately 116,000 employees in more than 60 countries worldwide. With sales of US \$32.3 billion in 2009, the company is a market leader in cardiac care, acute care and home healthcare, energy efficient lighting solutions and new lighting applications, as well as lifestyle products for personal well-being and pleasure with strong leadership positions in flat TV, male shaving and grooming, portable entertainment and oral healthcare. News from Philips is located at [www.philips.com/newscenter](http://www.philips.com/newscenter).

